

ABCA2 Antibody (Internal)
Goat Polyclonal Antibody
Catalog # ALS15778**Specification**

ABCA2 Antibody (Internal) - Product Information

Application	IHC-P, E
Primary Accession	Q9BZC7
Reactivity	Human, Horse, Dog
Host	Goat
Clonality	Polyclonal
Calculated MW	270kDa KDa
Dilution	IHC-P~~N/A E~~N/A

ABCA2 Antibody (Internal) - Additional Information**Gene ID 20****Other Names**

ATP-binding cassette sub-family A member 2, ATP-binding cassette transporter 2, ATP-binding cassette 2, ABCA2, ABC2, KIAA1062

Target/Specificity

Human ABCA2. This antibody is expected to recognize both reported isoforms (NP_001597.2; NP_997698.1).

Reconstitution & Storage

Store at -20°C. Minimize freezing and thawing.

Precautions

ABCA2 Antibody (Internal) is for research use only and not for use in diagnostic or therapeutic procedures.

ABCA2 Antibody (Internal) - Protein Information

Name ABCA2 ([HGNC:32](#))

Synonyms ABC2, KIAA1062

Function

Probable lipid transporter that modulates cholesterol sequestration in the late endosome/lysosome by regulating the intracellular sphingolipid metabolism, in turn participates in cholesterol homeostasis (Probable) (PubMed:<[a href="http://www.uniprot.org/citations/15238223"](http://www.uniprot.org/citations/15238223)target="_blank">15238223, PubMed:<[a href="http://www.uniprot.org/citations/21810484"](http://www.uniprot.org/citations/21810484)target="_blank">21810484, PubMed:<[a href="http://www.uniprot.org/citations/24201375"](http://www.uniprot.org/citations/24201375)target="_blank">24201375). May alter the transbilayer distribution of ceramide in the intraluminal membrane lipid bilayer, favoring its retention in the outer leaflet that results in

increased acid ceramidase activity in the late endosome/lysosome, facilitating ceramide deacylation to sphingosine leading to the sequestration of free cholesterol in lysosomes (PubMed:24201375). In addition regulates amyloid-beta production either by activating a signaling pathway that regulates amyloid precursor protein transcription through the modulation of sphingolipid metabolism or through its role in gamma-secretase processing of APP (PubMed:22086926, PubMed:26510981). May play a role in myelin formation (By similarity).

Cellular Location

Endosome membrane; Multi-pass membrane protein. Lysosome membrane; Multi-pass membrane protein. Note=Forms discrete, punctate intracellular vesicles.

Tissue Location

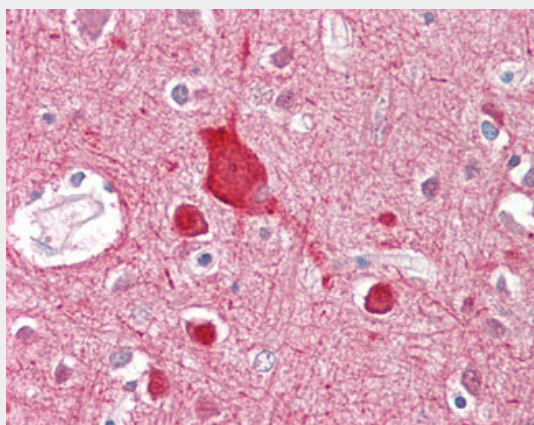
[Isoform 3]: Highly expressed in the brain, peripheral blood leukocytes and ovary, whereas lower levels of expression is observed in kidney and liver

ABCA2 Antibody (Internal) - Protocols

Provided below are standard protocols that you may find useful for product applications.

- [Western Blot](#)
- [Blocking Peptides](#)
- [Dot Blot](#)
- [Immunohistochemistry](#)
- [Immunofluorescence](#)
- [Immunoprecipitation](#)
- [Flow Cytometry](#)
- [Cell Culture](#)

ABCA2 Antibody (Internal) - Images



Anti-ABCA2 antibody IHC staining of human brain, cortex.

ABCA2 Antibody (Internal) - Background

Probable transporter, its natural substrate has not been found yet. May have a role in macrophage lipid metabolism and neural development.

ABCA2 Antibody (Internal) - References

Kaminski W.E.,et al.Biochem. Biophys. Res. Commun. 281:249-258(2001).
Vulevic B.,et al.Cancer Res. 61:3339-3347(2001).
Humphray S.J.,et al.Nature 429:369-374(2004).
Kikuno R.,et al.DNA Res. 6:197-205(1999).
Nakajima D.,et al.DNA Res. 9:99-106(2002).